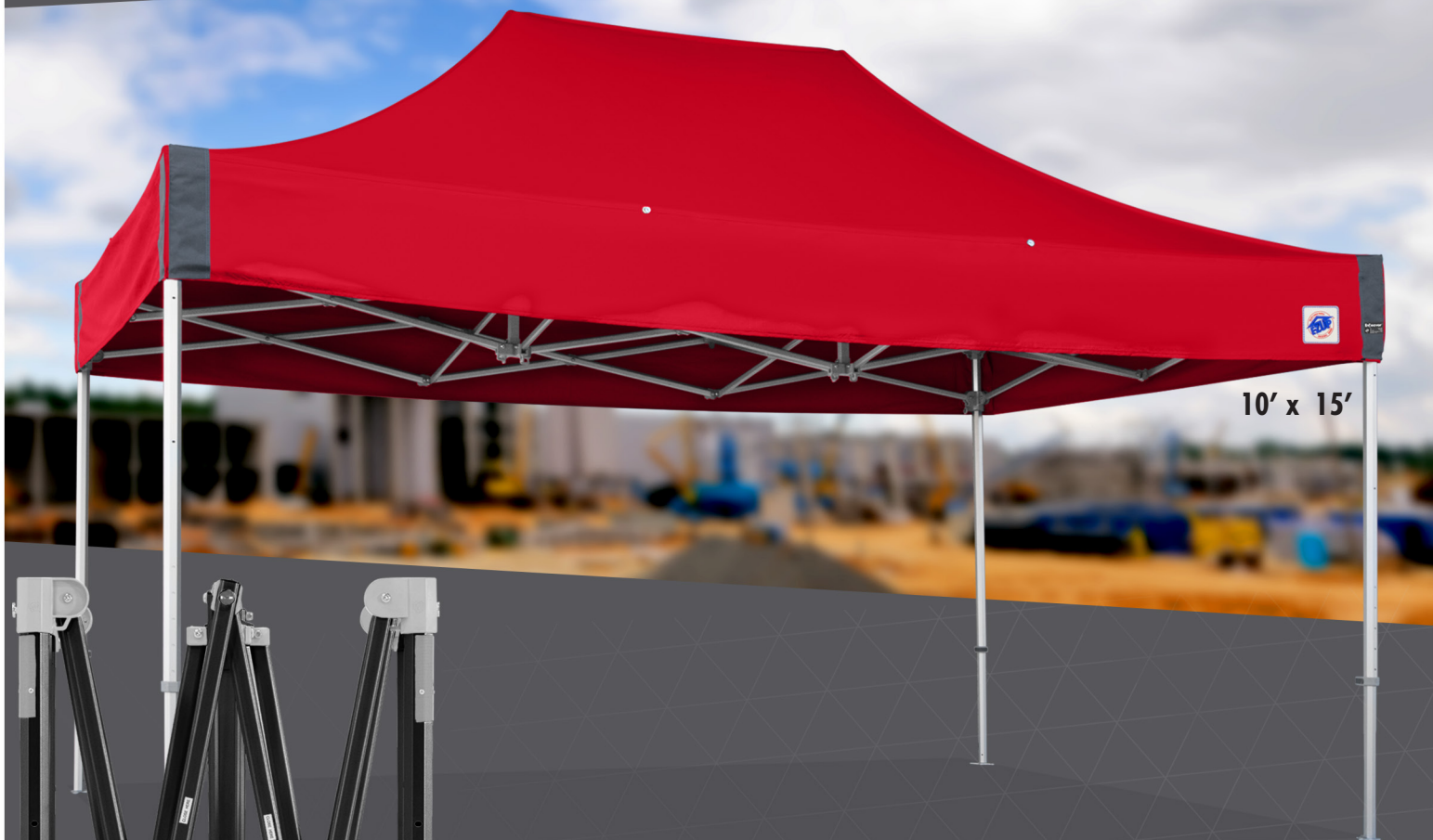


EnDeavor™



10' x 15'

ENDEAVOR™ Professional Shelter

Own the strongest and most durable Instant Shelter® product in the world, the Endeavor™ shelter. This patented one-piece professional-grade shelter is a strong, octagonal-legged shelter built to perform and is ideal for command posts, recruiting, military, government, and more. The Endeavor™ shelter has a frame constructed of 6061-T6 aircraft-grade aluminum and comes assembled with ALL-NEW hardware components and technology designed to make it stronger and endeavor to withstand the toughest environments.

Available in 10' x 10', 10' x 15' and 10' x 20'



ezup.com

Endeavor™ 10' x 10' (3 m x 3 m)

| | |
|----------------------------------|--|
| SHADED AREA | 100 sq ft (9 sq. m) |
| FRAME SHIPPING WEIGHT | 68 lbs. (27.4 kg) |
| TOP SHIPPING WEIGHT | 12 lbs. (5.4 kg) |
| TOP BOX DIMENSIONS | 26.5" L x 10.5" W x 3.5" H (67.3 cm x 26.6 cm x 8.8 cm) |
| FRAME BOX DIMENSIONS | 67" L x 12.5" W x 11.5" H (1.68 m x 32 cm x 20 cm) |
| MAXIMUM PEAK HEIGHT | 11' 2" (3.4 m) |
| MAXIMUM HEADROOM | 6' 11" (2.2 m) |
| MAXIMUM VALANCE CLEARANCE HEIGHT | 6' 9" (2.1 m) |



Endeavor™ 10' x 15' (3 m x 4.5 m)

| | |
|----------------------------------|---|
| SHADED AREA | 150 sq ft (14 sq. m) |
| FRAME SHIPPING WEIGHT | 100 lbs. (45.3 kg) |
| TOP SHIPPING WEIGHT | 15 lbs. (6.8 kg) |
| TOP BOX DIMENSIONS | 26.5" L x 14.5" W x 4.5" H (67.3 cm x 36.8 cm x 11.4 cm) |
| FRAME BOX DIMENSIONS | 67" L x 17" W x 14" H (1.68 m x 43 cm x 35.5 cm) |
| MAXIMUM PEAK HEIGHT | 11' 2" (3.4 m) |
| MAXIMUM HEADROOM | 6' 11" (2.2 m) |
| MAXIMUM VALANCE CLEARANCE HEIGHT | 6' 9" (2.1 m) |



Endeavor™ 10' x 20' (3 m x 6 m)

| | |
|----------------------------------|--|
| SHADED AREA | 200 sq ft (18.58 sq. m) |
| FRAME SHIPPING WEIGHT | 129 lbs. (59.5 kg) |
| TOP SHIPPING WEIGHT | 22 lbs. (10 kg) |
| TOP BOX DIMENSIONS | 27" L x 15" W x 5" H (69 cm x 38 cm x 13 cm) |
| FRAME BOX DIMENSIONS | 65" L x 26" W x 13.5" H (164.5 m x 65.5 cm x 34 cm) |
| MAXIMUM PEAK HEIGHT | 11' 2" (3.4 m) |
| MAXIMUM HEADROOM | 6' 11" (2.2 m) |
| MAXIMUM VALANCE CLEARANCE HEIGHT | 6' 9" (2.1 m) |





E-Z GLIDE TRUSS WASHERS

Provide Low Friction for Smooth Set Up

AUTO-PEAK® TENSIONER

Ensures Proper Top Fit and Form



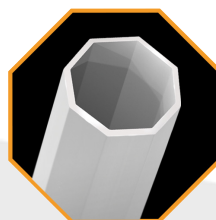
PROFESSIONAL-GRADE FABRIC TOP

Greater Durability and Longer Lasting Performance



STABILIZED POWER STRUCTURE

Multiple Stabilization Points for Reinforced Support of Architectural Design



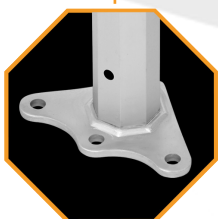
AIRCRAFT-GRADE ALUMINUM FRAME

Lighter Weight 6061-T6 Aluminum with Octagonal Design for Added Performance



AUTO-SLIDER® PULL PIN

Pull Pin Grooved for Quick Lock and Release



HEAVY-DUTY FOOT PAD

6061-T6 Aircraft-Grade Aluminum and Extra Wide for Increased Stability



TOGGLE LEG ADJUSTERS

Comfortable Toggle Grip
5 Height Adjustment Options



HIGH-STRENGTH CORNERS

Heavy-Duty for Greater Durability
Includes Built-In FXT Attachment Points

All Endeavor™ products include the following features:

| | |
|-------------------------|--|
| FRAME | 6061-T6 Aircraft-Grade Aluminum Frame is Rust Resistant and 25% Lighter Than Steel |
| TOP FABRIC | Professional-Grade Fabric |
| TOP SPECIFICATIONS | Meets CPAI-84, NFPA-701 and CAN/ULC-S109 Fire-Resistant Requirements |
| PRODUCT INCLUDES | Fabric Top, Folding Frame, and Cover Bag |
| CUSTOM PRINTING OPTIONS | Custom Graphics Available* |
| WARRANTY | 7 Years |

1



2



3



SETS UP IN SECONDS™

Matte Black Frame Shown

*Ask a representative for specific custom options.

ezup.com

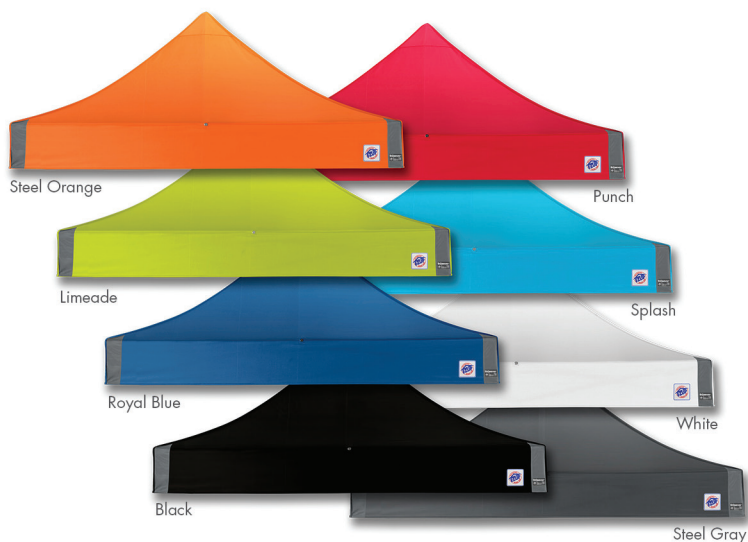


Deluxe Wide-Trax™ Roller Bag Sold Separately

MIX AND MATCH

Customize your Endeavor™ shelter to suit your style with a custom color top or custom-printed graphics! Whichever direction you go, your Endeavor™ shelter is UP for Everything™.

AVAILABLE STOCK TOP COLORS



OPTIONAL ACCESSORIES

- Event Lights
- Deluxe Weight Bags
- Heavy-Duty Stake Kit
- Sidewalls & Railskirts*
- Deluxe Wide-Trax™ Roller Bag**
- Flags and Banners
- Tables & Table Covers
- Directors Chairs
- Graphic Sails & Liners

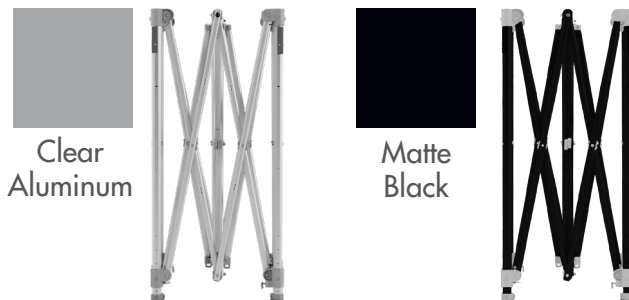
*Railskirts available for 10' side only

**Not available in 10' x 20'

RECOMMENDED USES

- Trade Shows
- Corporate Events
- Exhibit Booth
- Event Marketing
- Rental Industry
- Sponsorship Advertising
- Industrial Applications
- Business & Civic Events
- Product Demonstrations
- Indoor & Outdoor Display
- Automotive & Racing Events
- Disaster Relief Services
- Emergency Response

AVAILABLE FRAME COLORS



AVAILABLE PREMIUM TOP COLORS



International E-Z UP, Inc.
1900 Second Street
Norco, California 92860
(951) 279-0999 • FAX (800) 810-8775

TO ORDER:
(800) 45-SHADE
(800) 457-4233